

# INSECT UPDATE

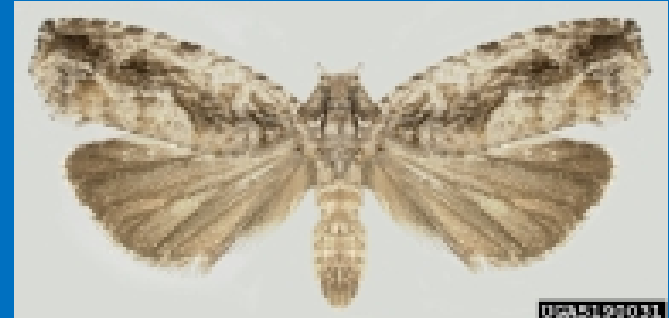
Will Hudson

Jim Dutcher

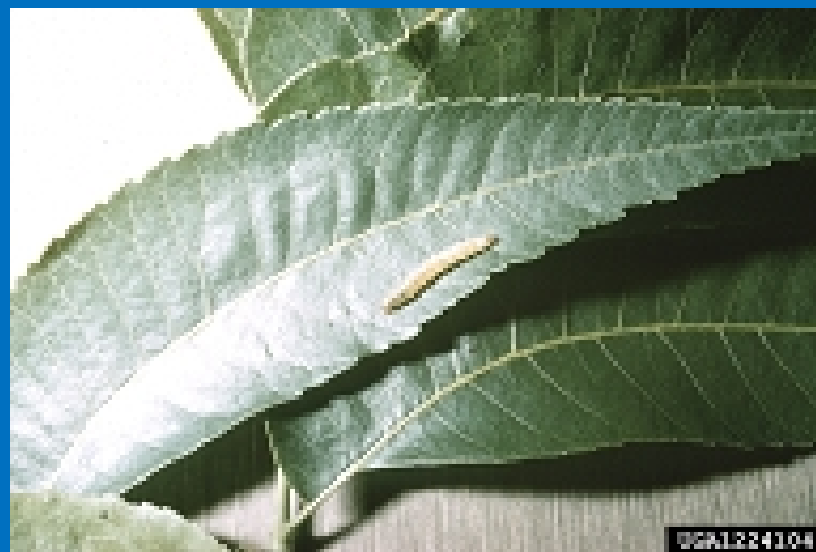
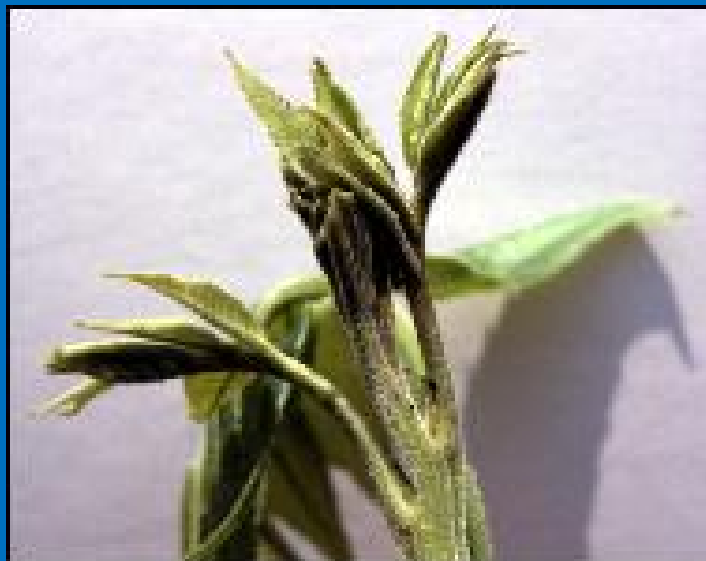
University of Georgia

# New Plantings

- Budmoth
  - Early season attack can seriously damage young trees
  - Larvae feed on leaves, buds and shoots
  - Timing of treatments is important
  - Lorsban, Spintor, Intrepid, Belt, Altacor are effective



# Pecan budmoth



# Altacor (DuPont)

- Active ingredient is Rynaxypyr (IRAC group 28)
- Provides excellent control of caterpillars
- Rate is 2.0 – 4.5 oz.
  - No more than 4 applications/season
  - No more than 9 oz./season
- PHI is 10 days
- Cost?

# Asian Ambrosia Beetle

First signs of damage usually is “Toothpicks” on trunk

Treat and watch. If the top wilts, cut and destroy.

Any pyrethroid applied to the trunk will work.



UGA5159029

# Flat-headed Apple Borer



# Yellow Pecan Aphid



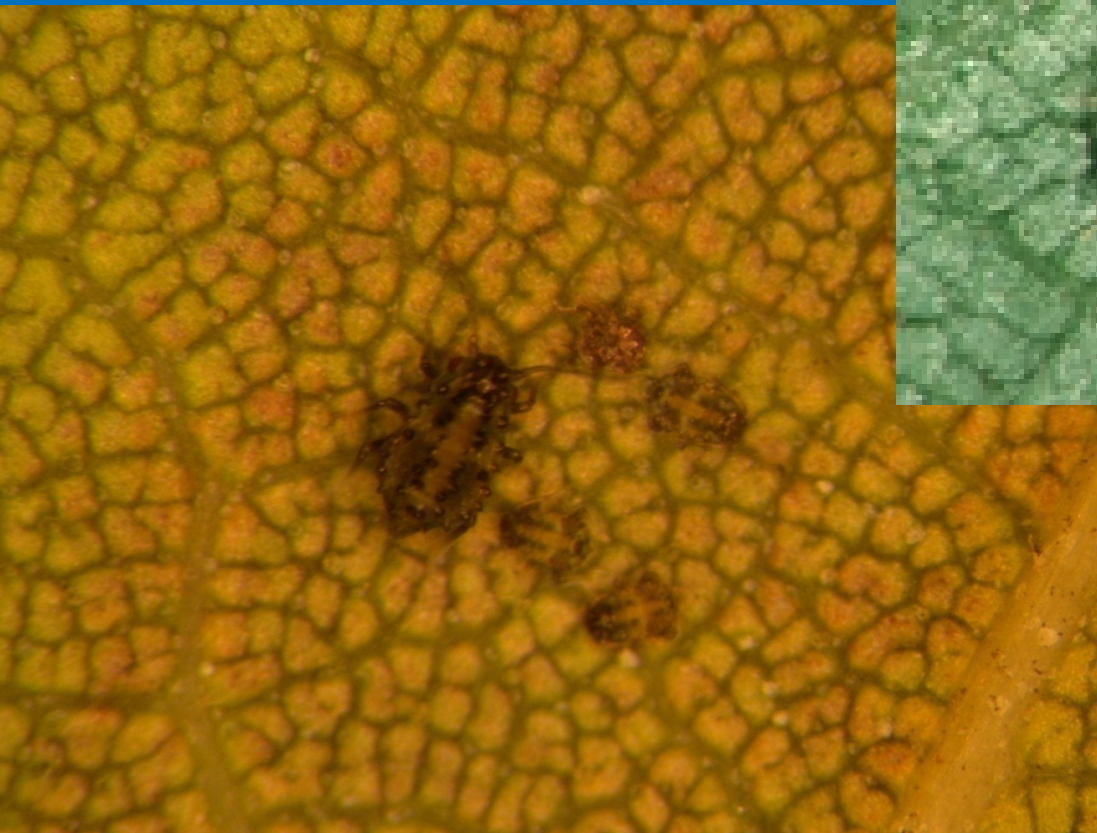
# Blackmargined Aphid

Blackmargined aphids are most abundant in spring and the again in the Fall





# Black Pecan Aphid



# Early summer populations



# All aphids are not the same!

Early season yellow aphid populations feed beneficials and keep them building in the orchard.



Early season black aphids are here and gone, making them hard to target.



# Black aphid vs. Mummy



Old standby's still work for Black

Pecan Aphid:

Chlorpyrifos

Imidacloprid and other

neonicotinyls (Centric, Assail,  
Belay)

Fulfill

# Yellow aphids are more problematic

- Resistance to neonicotinyls is widespread
- Contact insecticides like chlorpyrifos do little
- New materials are more expensive, but control both groups
  - Fulfill
  - Nexter
  - Movento

# New Aphid Product

- Closer (sulfoxaflor) from Dow
- In UGA tests performance is equal to other good aphicides
- Low use rates give several weeks of control for BMA
- Cost rumored to be less, but release date not certain (June?)

# Extension Programs

- County production meetings
- GPGA meetings
  - Savannah Jan. 4?
  - Perry March 28
- Pecan Scout School
  - March, odd years (March , 2013)
- Pecan Newsletter
- Website
  - [www.cpes.peachnet.edu/ugapecan/](http://www.cpes.peachnet.edu/ugapecan/) or [www.ugapecan.org](http://www.ugapecan.org)
- Hotline: 800 – 851 - 2847