

Economics of Pre-Emergent Herbicide Programs of Pecan

Andrew Sawyer, Southeast Georgia Area Pecan Agent

Guy Hancock, Ag Economics Agricultural Data Scientist

Dr. Lenny Wells, UGA Pecan Horticulturalist



UNIVERSITY OF GEORGIA
EXTENSION

What is the cost per acre?

Alion*	<u>Year 1</u>	<u>Year 3</u>	<u>Year 5+</u>
	\$209	\$ 161	\$105
	5 oz / 2 x	3.5 oz / 2 x	5 oz / 1 x

VS

Glyphosate + Glufosinate	\$178	\$178	\$178
	2 qt / 24 oz 8x	2 qt / 24 oz 8x	2 qt / 24 oz 8x

VIDALIA ONION RESEARCH CENTER

August 2023

2024 Treatments

- | | |
|--------------------------|----------------------|
| 1. Alion | 5 oz |
| 2. Alion | 3.5 oz (2023 & 2024) |
| 3. BrakeOn | 43 oz |
| 4. BrakeOn + Matrix | 21 oz + 4 oz |
| 5. Chateau | 6 oz |
| 6. Chateau | 12 oz |
| 7. Pindar + Surflan | 2 pt / 2 qt |
| 8. Simazine +
Surflan | 3 qt / 2 qt |

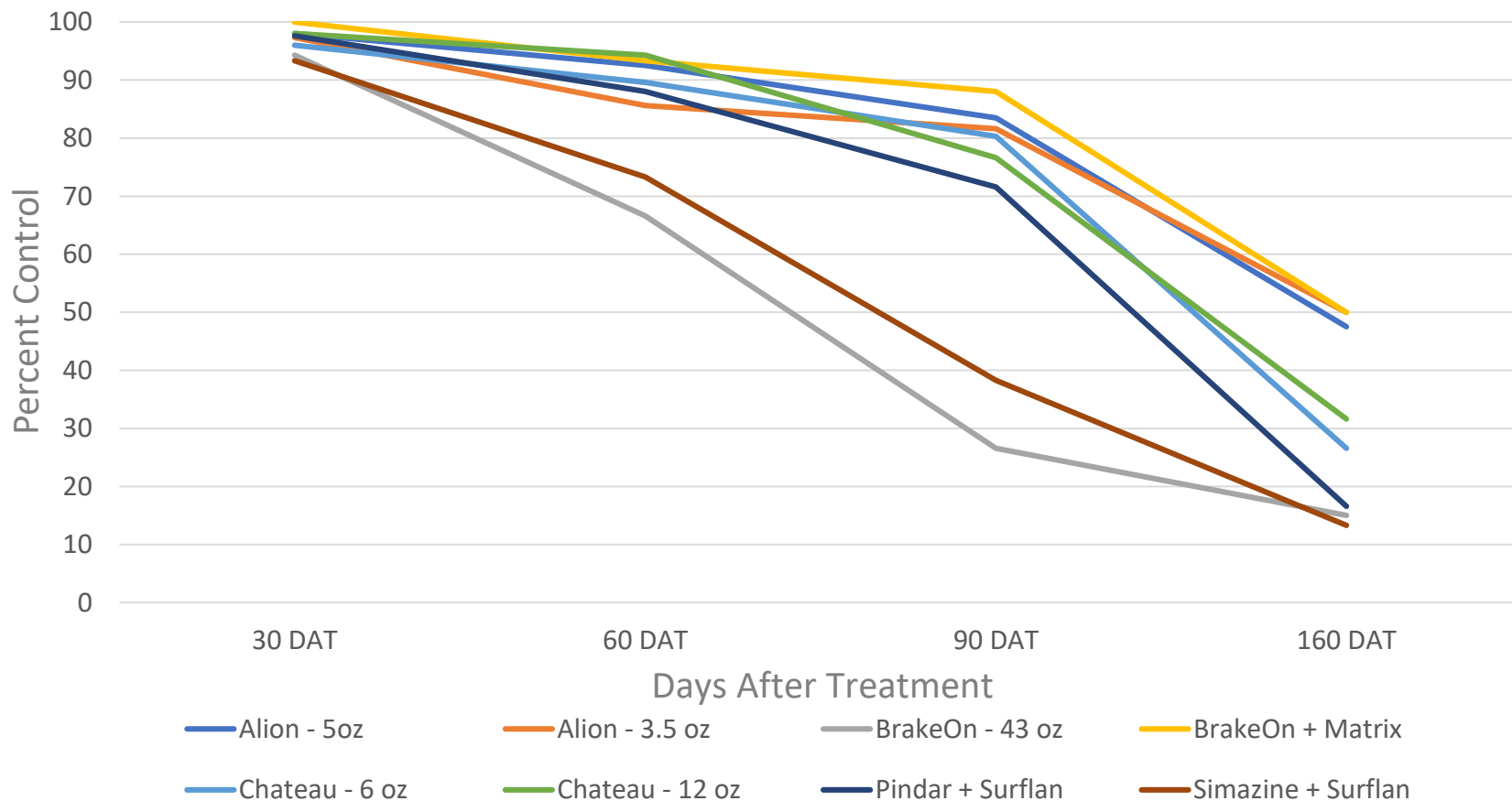


2024 Plot Map



2024 Pre-Emergent Herbicide Control

p = 0.160



All Treatments, All Ratings

		<u>Ave Mean Control</u>
1. BrakeOn 21oz + Matrix 4oz	a	82.8
2. Alion 5 oz	a	80.4
3. Alion 3.5 oz	a	78.7
4. Chateau 12 oz	a	76.3
5. Chateau 6 oz	a	73.3
6. Pindar 2pt + Surflan 2 qt	ab	69.2
7. Simazine 3pt + Surflan 2qt	b	54.6
8. Brake On 43 oz	b	50.7

p = 0.050

160 Days After Treatment (DAT)

	<u>% Control</u>	<u>Program Cost / acre *</u>
1. BrakeOn 21oz + Matrix 4oz	50%	\$170.02
2. Alion 3.5 oz**	50%	\$161.48
3. Alion 5 oz	47.5%	\$209.30
4. Chateau 12 oz	31.6%	\$81.28
5. Chateau 6 oz	26.6%	\$73.42
6. Pindar 2pt + Surflan 2qt	16.6%	\$211.20
<hr/>		
7. Brake On 43 oz	15%	\$184.10
8. Simazine 3qt + Surflan 2qt	13.3%	\$170.12
Glyphosate 2qt + Glufosinate 24oz		\$178.00

p = 0.160

Alion 5 oz



90 DAT



160 DAT

Alion 3.5 oz



90 DAT (2023)



160 DAT (2024)

Brake On 43 oz



Brake On 21oz + Matrix 4oz



Chateau 6 oz



90 DAT



160 DAT

Chateau 12 oz



160 DAT

Pindar 2 pt + Surflan 2 qt



90 DAT

Simazine 3 qt + Surflan 2 qt



90 DAT



160 DAT

2025 Herbicide Program Cost

Month	Post Emergent	Cost	Alion 5oz	Cost	Alion 3.5oz	Cost	Chateau 6oz	Cost	Chateau 12oz	Cost
April	Glu 24 oz +	\$6.26	Glu 24 oz +	\$6.26	Glu 24 oz +	\$6.26	Glu 24 oz +	\$6.26	Glu 24 oz +	\$6.26
	Gly 2 qt	\$16.02	Glu 2qt +	\$16.02	Gly 2 qt +	\$16.02	Gly 2 qt +	\$16.02	Gly 2 qt +	\$16.02
			Alion 5 oz	\$79.70	Alion 3.5 oz	\$55.79	Chateau 6oz	\$11.76	Chateau 12 oz	\$23.52
May	Glu 24 oz +	\$6.26								
	Gly 2 qt	\$16.02								
June	Gly 2 qts	\$16.02								
June	Glu 24 oz +	\$6.26								
	Gly 2 qts	\$16.02								
July	Gly 2 qts	\$16.02								
July	Glu 24 oz +	\$6.26	Glu 24 oz +	\$6.26	Glu 24 oz +	\$6.26	Glu 24 oz +	\$6.26	Glu 24 oz +	\$6.26
	Gly 2 qts	\$16.02	Gly 2 qt +	\$16.02	Gly 2 qt +	\$16.02	Gly 2 qt +	\$16.02	Gly 2qt	\$16.02
			Alion 5 oz	\$79.70	Alion 3.5 oz	\$55.79	Chateau 6oz	\$11.76		
August	Gly 2 qts	\$16.02								
September	Glu 24 oz +	\$6.26							Glu 24 oz +	\$6.26
	Gly 2 qts	\$16.02							Gly 2qt	\$16.02
October										
Chem/		\$159.46		\$203.96		\$156.14		\$68.08		\$74.68
Fuel		\$18.69		\$5.34		\$5.34		\$5.34		\$6.60
TOTAL		\$178.15		\$209.30		\$161.48		\$73.42		\$81.28

2025 Herbicide Program Cost

Month	Brake On	Cost	Pindar Fall	Cost	Pindar Full Season	Cost	Simazine	Cost
March					Glu 24 oz + Gly 2qt + Pindar 2 pt + Surflan 2 qt	\$6.26 \$16.02 \$55.78 \$26.20		
April	Glu 24 oz + Gly 2qt + BrakeOn 21 oz + Matrix 4 oz	\$6.26 \$16.02 \$39.48 \$23.88	Glu 24 oz + Gly 2qt + Chateau 12 oz	\$6.26 \$16.02 \$23.52			Glu 24 oz + Gly 2qt + Simazine 3 qt + Surflan 2 qt	\$6.26 \$16.02 \$22.14 \$26.20
June								
July	Glu 24 oz + Gly 2 qt + BrakeOn 21 oz	\$6.26 \$16.02 \$39.48	Glu 24 oz + Gly 2qt +	\$6.26 \$16.02	Glu 24 oz + Gly 2qt +	\$6.26 \$16.02	Glu 24 oz + Gly 2qt + Simazine 3 qt + Surflan 2 qt	\$6.26 \$16.02 \$22.14 \$26.20
August								
September	Glu 24 oz + Gly 2 qt	\$6.26 \$16.02					Glu 24 oz + Gly 2 qt	\$6.26 \$16.02
November			Glu 24 oz + Gly 2qt + Pindar 2 pt +	\$6.26 \$16.02 \$55.78	Glu 24 oz + Gly 2qt + Pindar 2 pt +	\$6.26 \$16.02 \$55.78		
Chem/		\$163.42		\$133.62		\$204.60		\$163.52
Fuel		\$6.60		\$6.60		\$6.60		\$6.60
TOTAL		\$170.02		\$140.22		\$211.20		\$170.12

2024 Summary

- All programs maintained weed control for 60 days
- After 60 DAT, BrakeOn and Simazine began breaking down
- Everything began breaking down after 90 DAT
- BrakeOn + Matrix, both Alion rates maintained 50% control at 160 DAT
- Alion @ 3.5 oz was sprayed in '24 after two shots of 3.5 oz in '23, which cost \$157 in '23
- Full rate and half rate of Chateau were no statistical difference in longterm control
- Most programs cost less than post emergent only program



Acknowledgements

Guy Hancock, *UGA Ag
Economics*

Tim Grey, *UGA Weed Science*

Wayne Mitchem, *NC State
Weed Science*

Eric Prostko, *UGA Weed
Science*

Lenny Wells, *UGA Horticulture*

Bryan Wilkins, *Auburn
Horticulture*



Georgia
Pecan
Commodity
Commission



UNIVERSITY OF GEORGIA
EXTENSION